



20-22 Feb 2026

www.10to4.org



Tropic Air

YOUR 2025 IMPACT REPORT IS HERE

*All those climbs and sore
legs? Totally worth it.
So, Let's dive in!*





WHAT YOU DID?

You rode across the Mount Kenya landscape, a UNESCO World Heritage Site with a mountain whose ecosystems sustain the lives of millions of Kenyans, forest and wildlife. A landscape that holds significant cultural and spiritual identity, full of stories, and wonder.

Through your participation and tenacity, you played a big part in protecting one of the most beautiful places on Earth. You kept its forests standing, its rivers flowing, its wildlife free, and its people thriving.

WHAT YOU ACHIEVED

AREA CONSERVED

You made the sustainable management of Mount Kenya Biosphere Reserve and UNESCO World Heritage Site, possible and seamless by sustaining Wildlife and Habitat Protection operations.

51,399

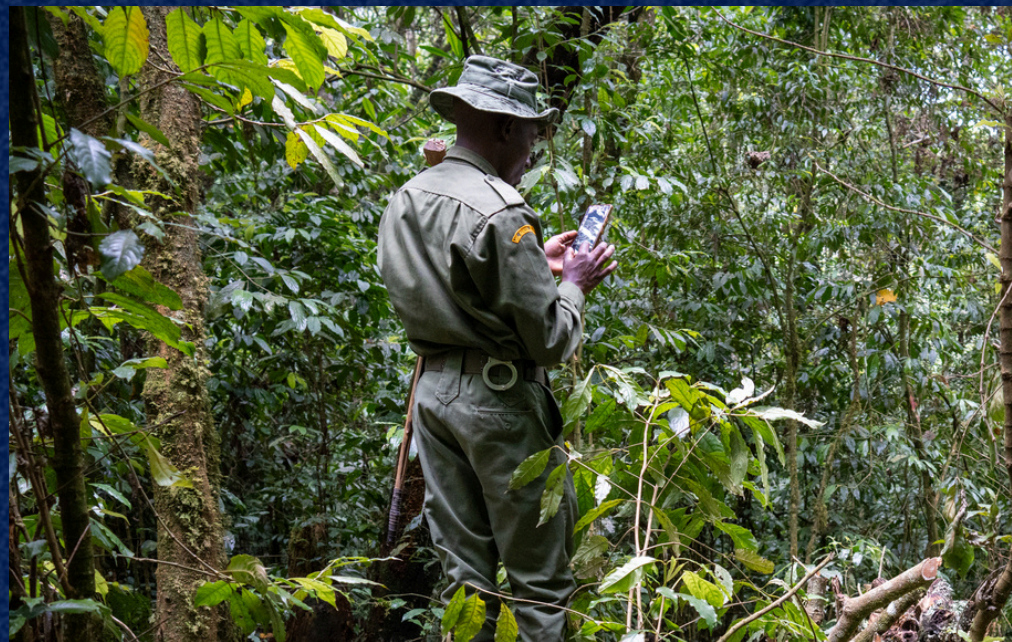
Hectares were protected and conserved.

WILDLIFE PROTECTED

You made it possible for wildlife to roam freely and safely!

957

elephants and 23 other wildlife species (such as lions, zebras, leopards among others) safely acrossed the Mount Kenya, Ngare Ndare and Laikipia landscapes through the Mount Kenya Elephant Corridor.



ACCESS TO PRIMARY HEALTHCARE

You bridged a critical health gap among forest edge communities.

28,828

people have received free healthcare services while

448,816 have accessed essential health education, including young people have received essential health information therefore embracing sustainable health seeking behaviour.

EDUCATION

You influenced change and action by educating

2501

on sustainable conservation practices You also inspired , children and drove innovation and creativity through the Junior Ranger Program.



A STORY ABOUT A GENET

A remarkable incident unfolded in Igoji East Ward, Meru County, one of the counties surrounding the Mount Kenya Forest. Mr Kinyua, a small-scale farmer, had been grappling with a mysterious problem on his farm. Every day, he would discover dead chicks in his coop. This persisted for a week. Mr Kinyua was worried. Elsewhere, the chief had received similar reports of more chickens and even goats found dead. By the time Mr Kinyua visited the chief to give his account, panic had already spread like wildfire.

A stealthy predator was on the loose, a fast one too. Determined to protect his flock, Mr Kinyua first attempted to catch the elusive chicken killer with a net, but his efforts yielded no results. Frustrated but not defeated, he devised a new strategy involving a snap trap box, using one of his chicks as bait. His gamble paid off when he discovered a wide-eyed Genet inside the trap. What might have been a moment of dismay turned into curiosity and excitement, as many villagers flocked to his farm to see the rare creature.

In an inspiring turn of events, Mr. Kinyua chose compassion over retribution. Instead of harming the captured Genet, he decided to give it a second chance at life. He contacted the local chief, who quickly got in touch with the Mount Kenya Trust. Swiftly, the Joint Wildlife Patrol Team (JWPT), who are highly trained in managing human-wildlife conflict, was dispatched. The Genet was soon released back into the wild, darting from the trap and disappearing into the forest.

In situations such as these, either the animal or a person ends up injured or killed in the conflict. When tensions run high, communities may retaliate by setting traps, using poison, or hunting down the animal, often leading to further loss of wildlife and deepening mistrust between people and conservation authorities. Human-wildlife conflict remains a growing challenge around Mount Kenya, where more than 70 percent of households living near the forest boundary experience crop damage or livestock loss each year. Yet stories like Mr. Kinyua's remind us that coexistence is possible when compassion, awareness, and collaboration guide our response.



**JOIN US IN
2026 AS WE
MAKE MORE
MEMORIES
AND
IMPACT!**

THANK YOU FOR YOUR PARTICIPATION!

THANK YOU TO OUR 2025 SPONSORS!



Tropic Air
EST 1990 | KENYA



FLAMEX
Petroleum
ECONOMY. ENERGY. ENVIRONMENT



Braeburn Nanyuki
Summum Appeto

OL. DONYO FARM
TIMAU



SIRAI
HOUSE

arijju



NGARE NDARE
FOREST TRUST

